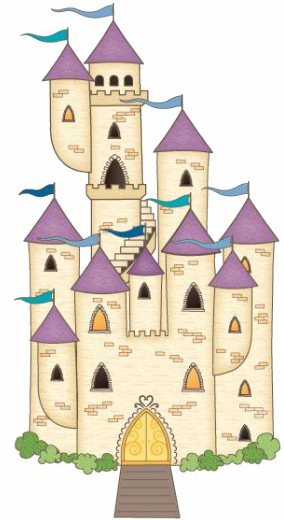




Fairytale ABC

(Fairy Tales and Characters)
By: David, Destinee, Erik, Lauren



A *is for*

Aladdin



B

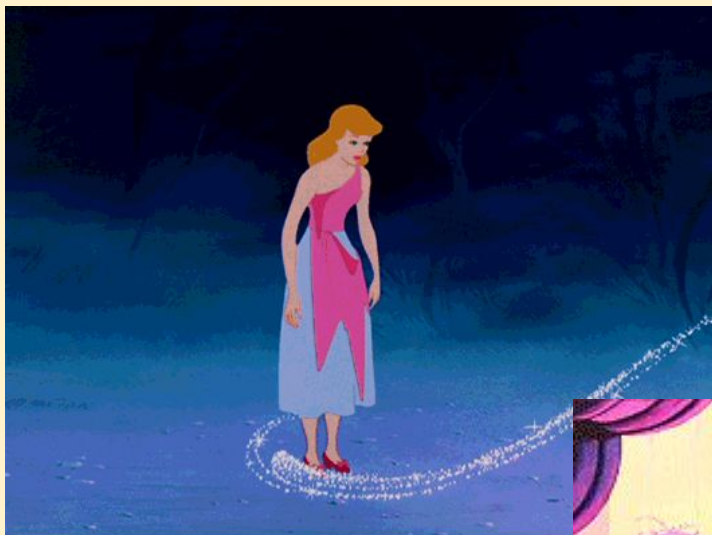
is for

Beauty and the Beast



C is for

Cinderella



D

is for

Donkey (from shrek)



E is for

Evil Stepmother (from Cinderella)



F is for



Princess and the Frog



G

is for

Goldilocks and the Three Bears



H

is for



Hansel and Gretel



I

is for

Ib and Little Christina



J

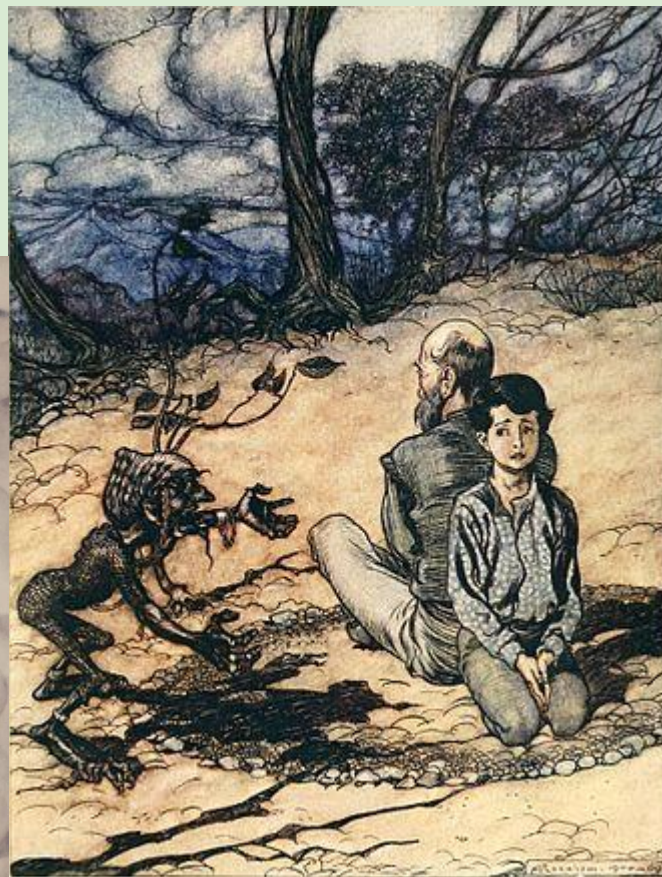
is for

Jorinda and Joringel



K is for

King of the Golden Mountain



L is for



Little Red Riding Hood



M is for

Mermaid



N

Is for

Neverland





O

is for

ogre(from shrek)



P

is for



Pinocchio



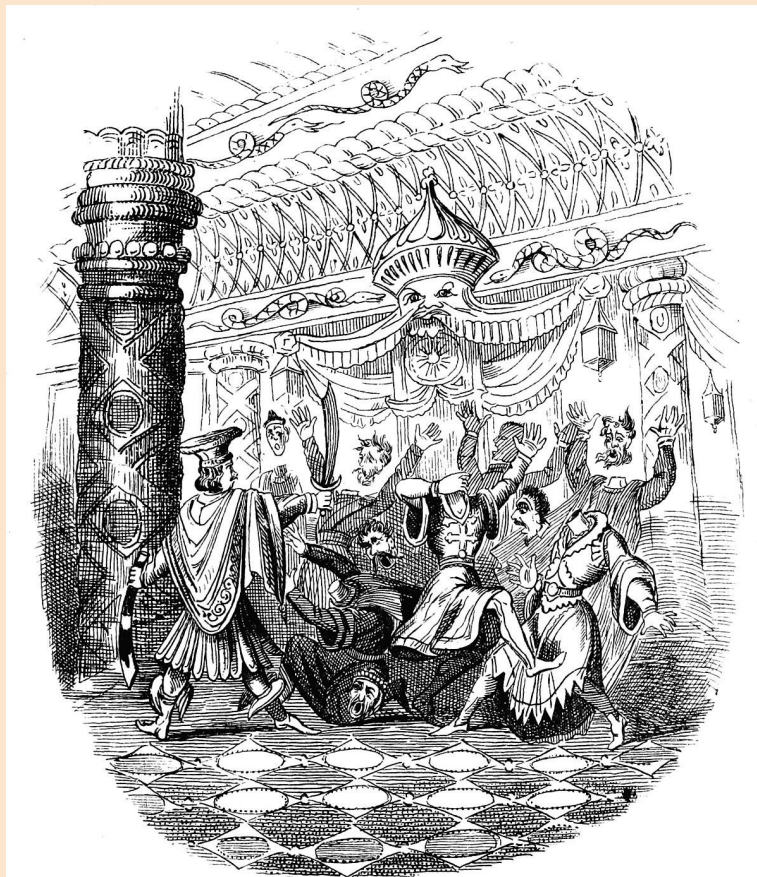
Q

is for

(The) Queen Bee

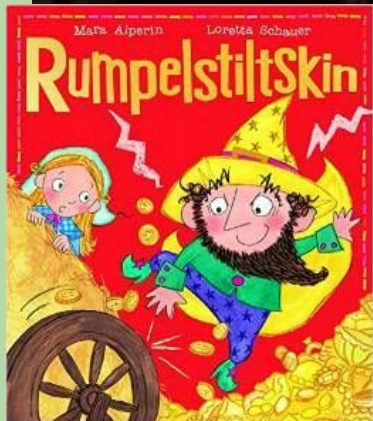


THE QUEEN BEE



R
is for

Rumpelstiltskin



S

is for

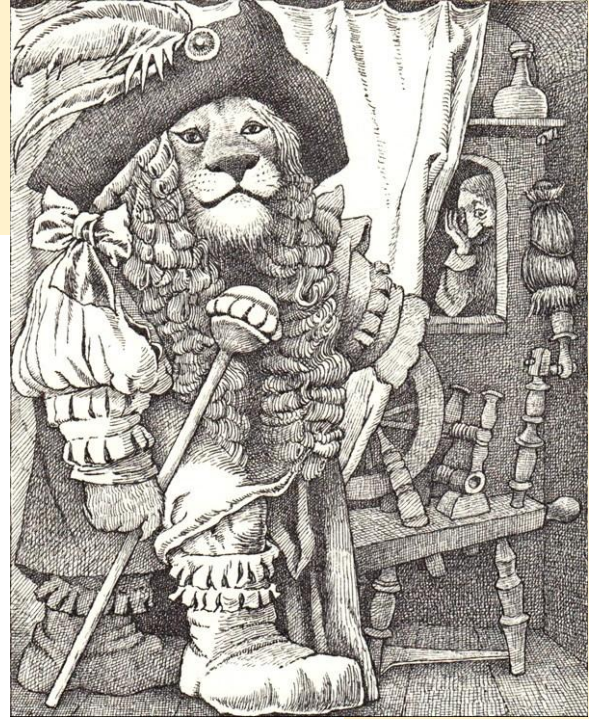
(The) Snow Queen



T

is for

(The) Twelve Huntsmen



U

is for

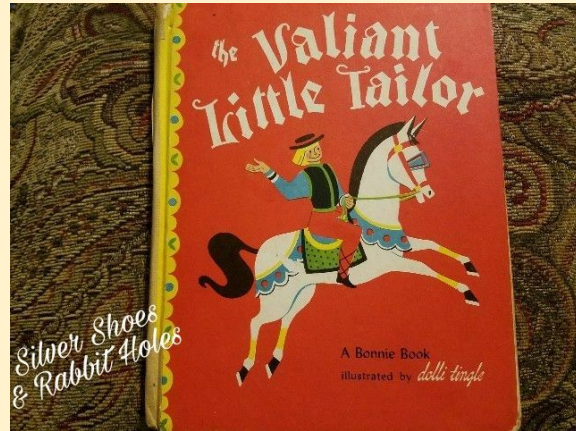
(The) Ugly Duckling



V

is for

(The) Valiant Little Tailor



W

is for



(The) White Snake



X

is for

Mr. Fox



"IF YOU OPEN IT, THERE'S NOTHING YOU MAY NOT EXPECT FROM MY ANGER."

*Be bold, be bold, but not too bold,
Lest that your heart's blood should run cold*

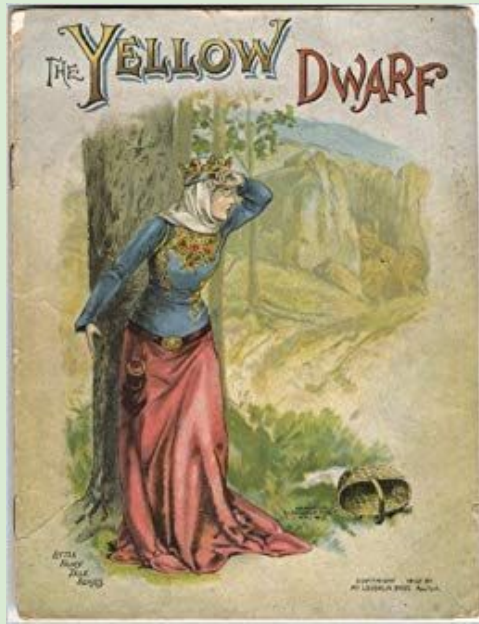


MR^R FOX

Y

is for

Yellow Dwarf



Z

is for Zelena



Cinderella Puzzle

<https://www.jigsawplanet.com/?rc=play&pid=22858bogz646>

